

Upgrading Your Bridge-IT Dental Application

To upgrade your current Bridge-IT software to very latest version you are required to go through two basic steps. These are 1. Upgrading the program files themselves and 2. Updating the database with any new tables and fields that may be required as new functionality is added to the program.

Follow the upgrade instructions that are outlined below.

Upgrading the Program

This will upgrade and add various files that enhance the functionality of the program.

1. After inserting the CD (or running the downloaded executable) you should find that the installation will start automatically, however if it doesn't, browse to the CD drive and double-click the file **SETUP.EXE**. This will start the installation wizard. Once this is completed the Bridge-IT software will install.
2. Press '**Next**' to go to the 'Select Installation Folder' step. The directory shown here must be set to the current location of your Bridge-IT software usually located in "C:\Program Files\Bridge-IT" or "C:\Program Files (x86)\Bridge-IT". Use the '**Browse**' button to locate the right directory and press '**Next**'.
3. Select '**Next**' until the software is installed.

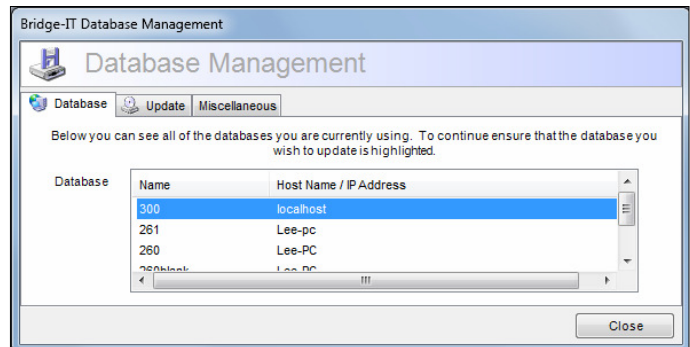


Note you must perform this upgrade on each of the PC's that is running the Bridge-IT program.

Updating the Database

In order to function correctly both the program and the database must be the same version. To do this, run the Database Management utility. You only need to run the database update ONCE from a single PC.

1. Go to '**Start**' from the main Windows screen, then '**Programs**'. Locate the folder named '**Fusion Software**' and inside here click on the entry named '**Bridge-IT Database Manager**'.
2. Once the program has started, make sure that the database shown on the first '**Database**' (or **Compact/Repair**' tab on the standard version) is correctly looking at the database you want to update. Then select the '**Update**' tab.



3. You will now see the current version of the database and a brief description of how the manager is going to update your database. Press the '**Update**' button at the bottom. **You may need to do this more than once to bring your database up to the latest version.**
4. If the update is successful the program will notify you that you can now use the Bridge-IT program.



Note you only need to update the database from one of the PC's.

You should now be able to use the new software. To make sure you're running the latest version of the software, try going into Help/About from the main menu. The version number should be updated. If you experience any problems at all or you just want to go through the update with us on the end of the phone, please call Fusion Software (UK) Ltd on 0845 094 4470.